



# 10+ YEARS

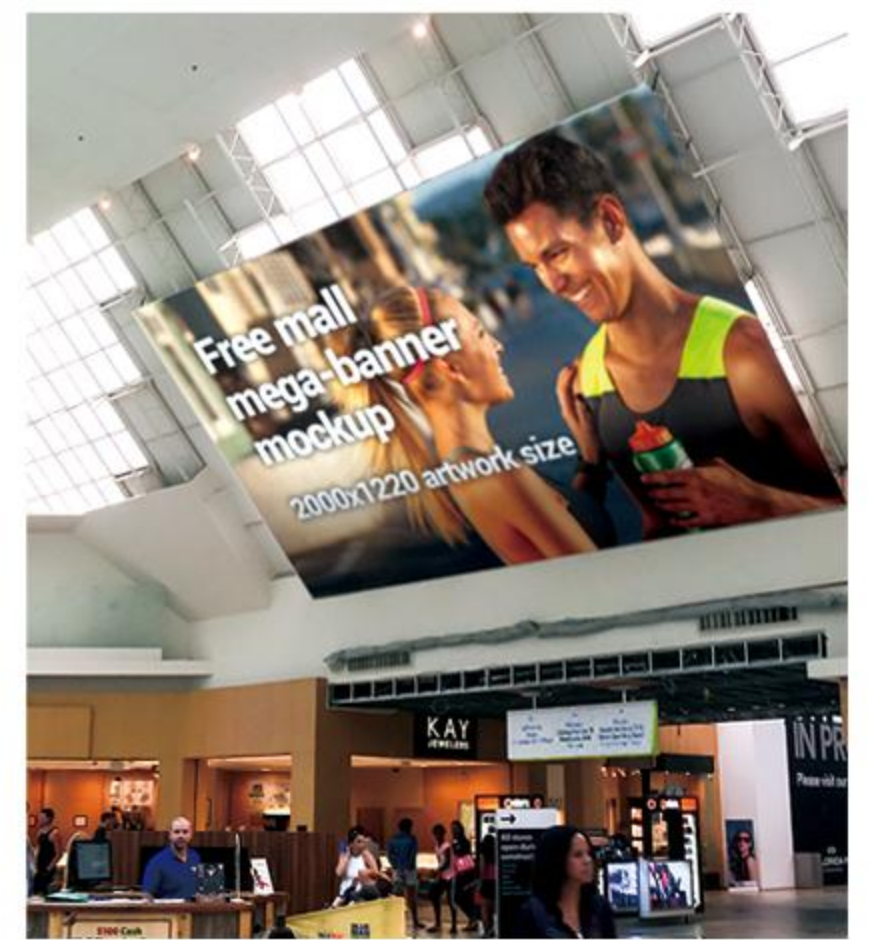
## OEM/ODM LED DISPLAY MANUFACTURER

Simple, of course MPLIED!

The world-class advanced technology makes LED Display Simple



ISE 2024  
Booth No: 6F200



**5000+** PROJECT EXPERIENCE

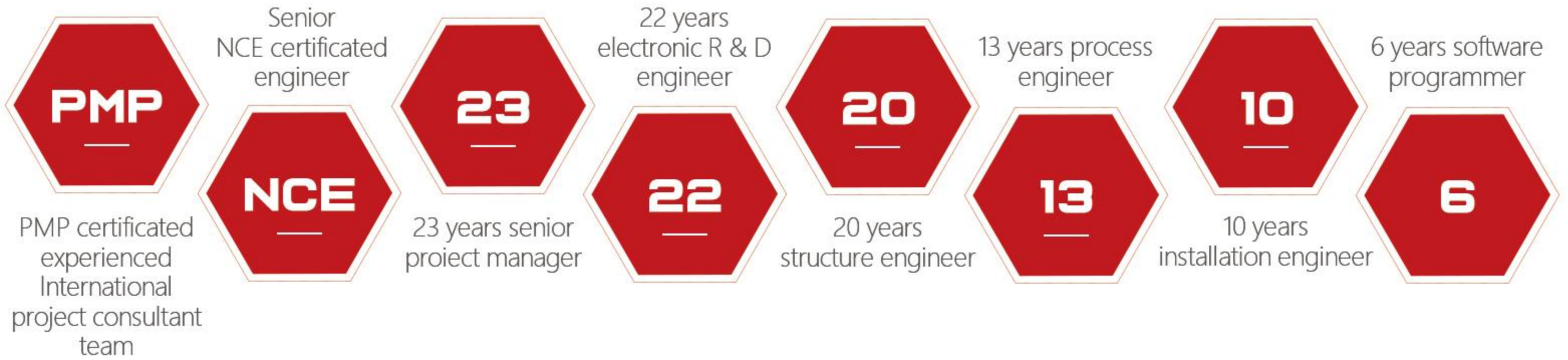


Email : [mplied@mplied.cn](mailto:mplied@mplied.cn)

## Core Advantages

Experts team with 20 years+ led display experience, providing the most comprehensive solution for your project.

## Experts Team



Picture & Video Visualization



CAD Drawing and 3D Simulation



Customized Design



Factory Engineer Support On Site



7x24h Technical Support



Local Installation Team

Tell us what you need and we will customize it for you! >>

## Why not Make It Simple?

MPLIED provides turnkey solution based on mission MAKE LED DISPLAY SIMPLE which can help your business easier and more competitive.

- ▶ Intelligent & smart IC build in, no need RCFGX file, just power on and use it.
- ▶ Senior engineer team for pre-sale service makes solution more professional and faster.
- ▶ 7\*24 online after-sale and local service makes operation process easier.
- ▶ The certified products allow smooth process for import and resell such as CE, Rohs, EPR, FCC, CB, CCC etc.
- ▶ The ISO9001 and ISO14001 factory makes production standard and stable.

Simple, of course MPLIED! [Http://www.mplied168.com](http://www.mplied168.com)

## Why **MPLIED**?

To be our business partner

- ▶ 10+ years OEM/ODM factory --Standard supplier chain support stable quality
- ▶ 20+ years expert team -- Competitive solution especially for customized projects
- ▶ 4000m2 monthly production capacity --Fast delivery time and High ROI
- ▶ 5000+ overseas project experience --Mature and professional project manager team
- ▶ Turnkey solution--One stop purchase
- ▶ USA,Europe,Philippines,Egypt etc warehouse-- Instant delivery and local worry-free service
- ▶ Agent wanted--Long term cooperation to be business partner

### After-sales:



- Warranty: 2-5years Full Screen Warranty and Lifelong Technical Support
- 1.7x24H online remote technical service for free
  - 2.Provide on-site guidance, installation and training services for the customer.
  - 3.Free maintenance in factory
  - 4.Within warranty,new sreen for free when led screen has failure beyond the normal range and be unrepairable (except for man-made damag or natural disaster)

### Local Service :



#### Global Headquarters-Shenzhen,China

ADD:Blog B, Building 10, Huafeng Industrial Zone, Fuyong, Baoan, Shenzhen, Guangdong Province. 518103

Tel:+86 15817393215 Email: mpled@mpled.cn

#### France

ADD:6.bis rue de la Paroisse 78000 Versailles, France

Tel:+33(0)662731311

#### USA

ADD:9848 Owensmouth Ave Chatsworth CA 91311 USA

Tel:(323) 687-5550 Email:daniel@mpled.cn

# RS series

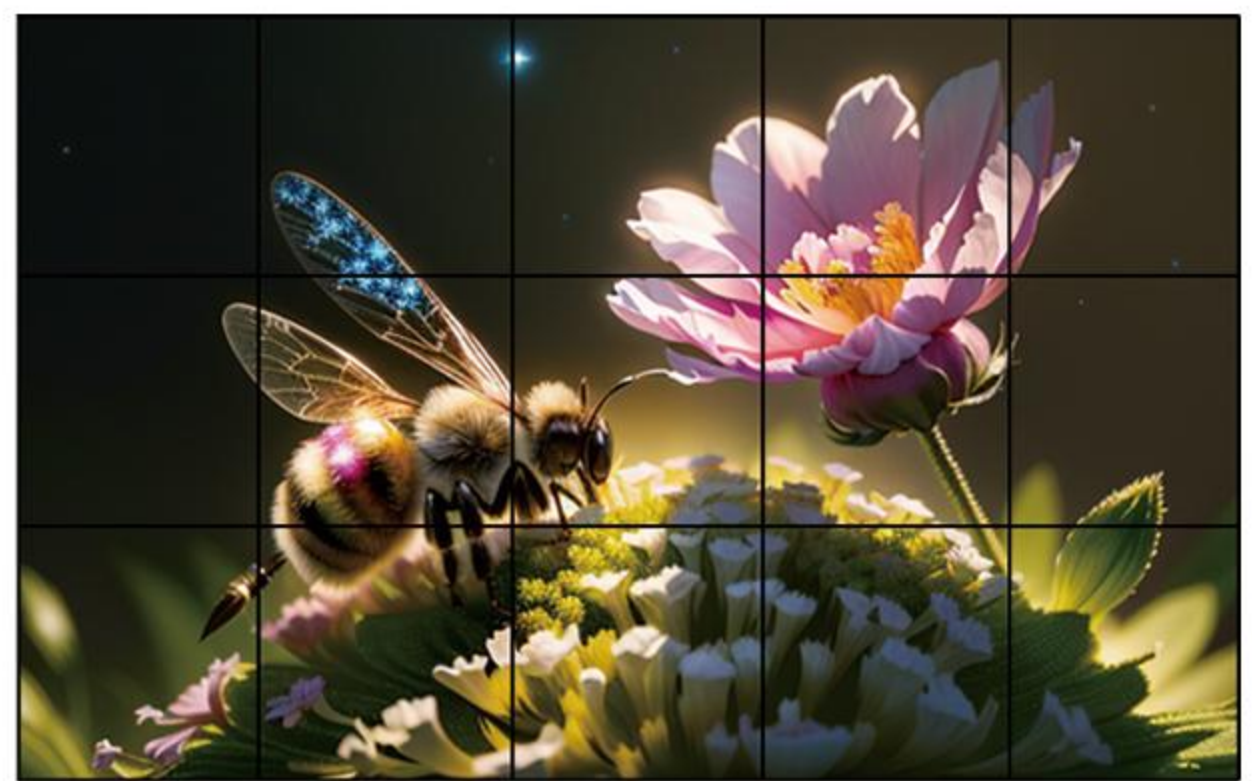
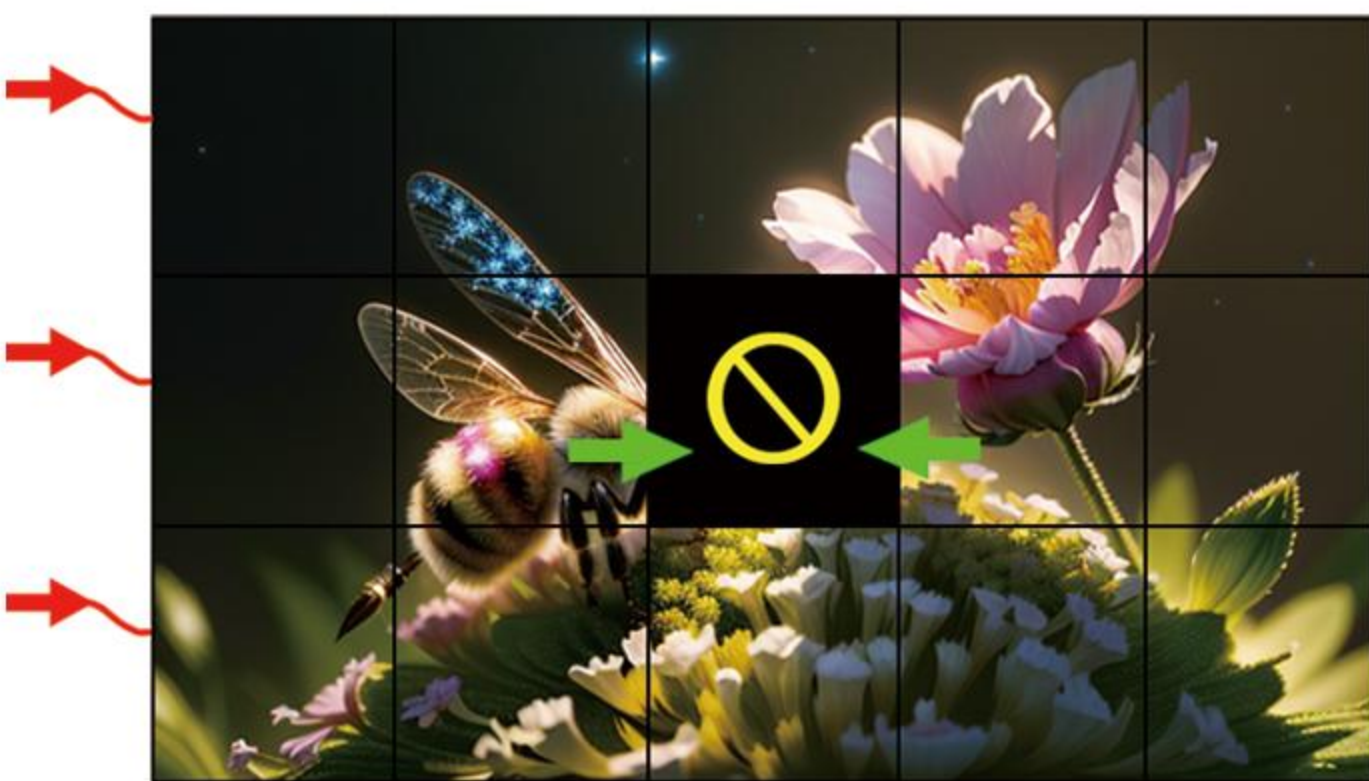
7680Hz refresh, Europe & USA warehouse



## Never black screen



Smart Chip for LED Modules  
No need RCFG file Just power one and use it



- AC Power Input
- ⊘ Power failure
- Power Sharing Function

Never black screen



Triple anti-collision

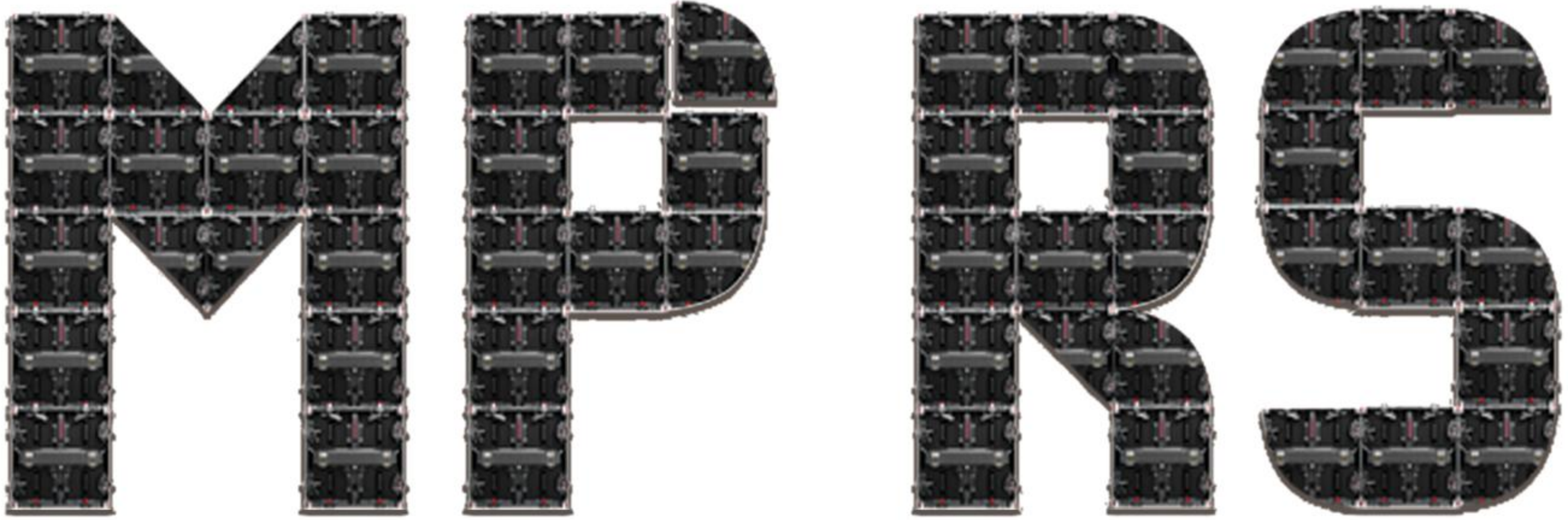


Front Maintenance



Rear Maintenance

# Creative Installation



RS



RS-T1



RS-T2



RS-R1



RS-R2



Support -7.5°, -3.5°, 0°, 3.5°, 7.5°



Ceiling installation



Hanging installation



Stack installation

Parameter	Indoor P1.56	Indoor P1.95	Indoor P2.6	Outdoor P3.91
Pixel pitch (mm)	1.56mm	1.95mm	2.6mm	3.91mm
LED	SMD1212	SMD1515	SMD1515	SMD1921
Cabinet weight(kg)	8.5kg	8.5kg	8.5kg	8.5kg
Brightness(nits)	800nits	800nits	1200nits	5500nits
Ingress protection	IP40			IP65
Cabinet size(W*H*D)(mm)	500x500x83mm			
Panel material	Die-cast aluminum			
Maintenance	Front/Rear			
Viewing Angle(H/V)	Horizontal:160°,Vertical:160°			
Grayscale (Bit)	16bit			
Max.Power Consumption(W/Panel)	160W/Panel			
Refresh rate (Hz)	7680Hz refresh,Euro warehouse			
Input Voltage(V)	96V-250V 50/60Hz			
Work environment	Temperature -20°C-60°C, 10%-90% Humidity			
Lifespan	Lifespan≥100000H, MTBT≥50000H			
Certification	ETL/FCC/CE/RoHS/CCC			



Africa 120m² P2.6 Indoor LED Display



Netherlands 325m² P2.6 outdoor LED Display



Italy 142m² P2.6 Indoor LED Display



Australia 133m² P2.6 Indoor LED Display

# AF Plus 10000nits High Brightness 50% Energy-saving LED display



## Marketing Value:

- Save 50% running cost (electronic fee, structure cost, installation cost, freight cost, update cost, brand spread cost etc) .
- No need Air conditioner or Fan, self dissipation.
- Clear and bright even in strong outdoor direct sunlight.
- Smart and user-friendly design, easier installation and operation.
- Easy installation: support directly mounted on wall or with simple bars.



Support directly wall mounted with simple bars(15mm thickness)



Support 90°angle solution

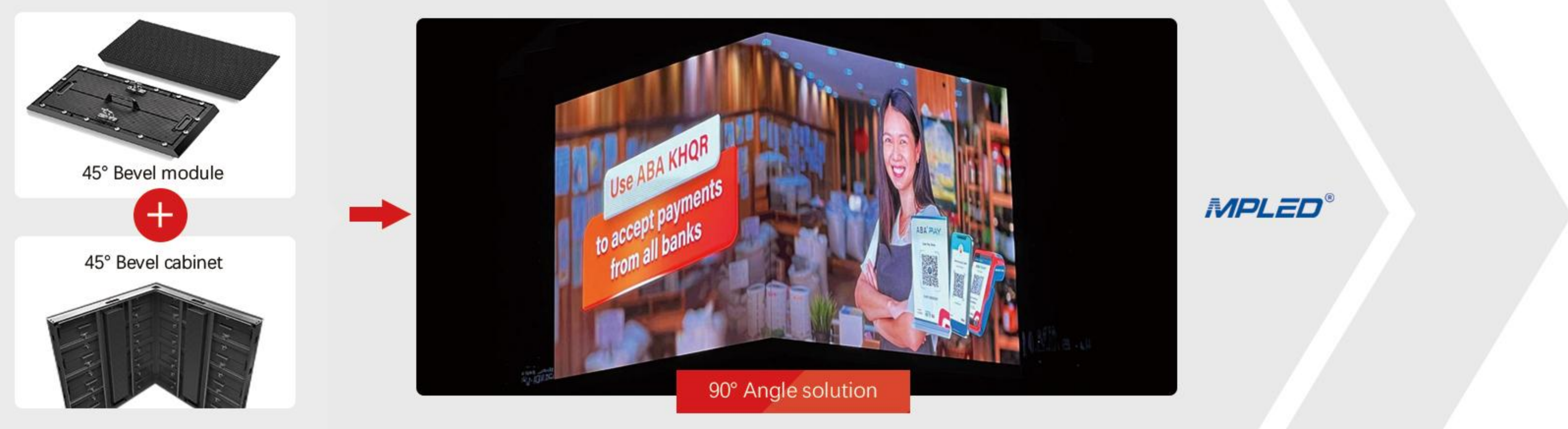
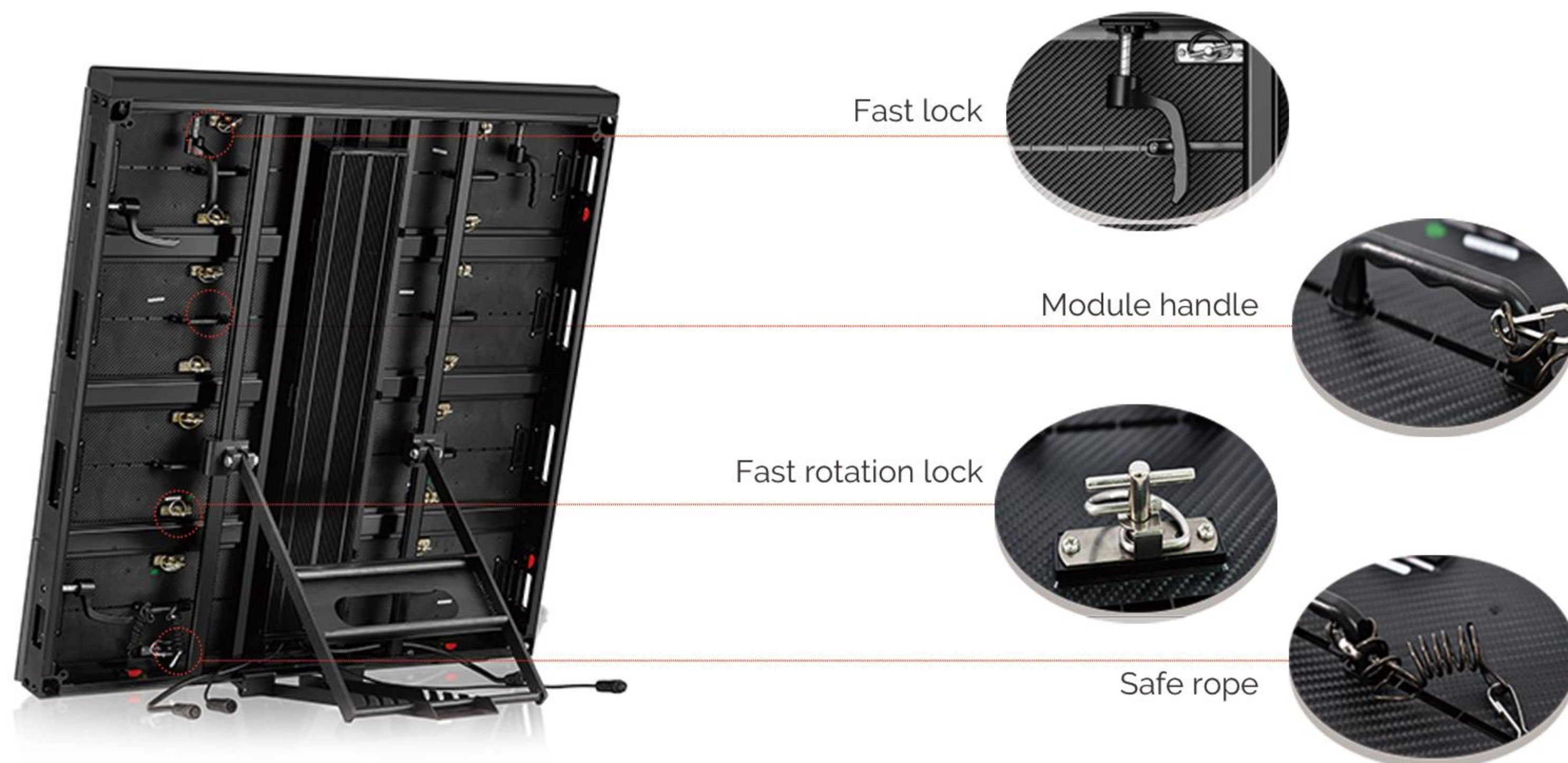


Arc perfect transition



Bars

# AF Plus



Parameter	P6.25	P7.8	P10
LED Lamp	SMD2727	SMD2727	SMD2727
Brightness (nits)	High brightness $\geq$ 10000nits, Standard brightness:6500-7500nits		
Refresh rate (Hz)	Standard refresh: 1920Hz,High refresh:3840H		
Panel size (mm*mm)	1000x1000x85mm		
Max/Ave (W/m <sup>2</sup> )	10000nits Max power consumption: 780W/m <sup>2</sup> , Ave 234W/m <sup>2</sup> 7000nits Max power consumption: 550W/m <sup>2</sup> , Ave:165W/m <sup>2</sup>		
IP grade	IP65 front / Rear		
Contrast ratio	Contrast ratio: 5000:1		
Grayscale (bit)	16bit		
Frame frequenc (Hz)	50/60HZ		
Viewing angle (Deg)	Horizontal $\geq$ 160° , Vertical $\geq$ 140°		
Install / Maintenance way	Maintenance way: Front or rear maintenance; Install way: Front or rear install		
Work environment	Temperature -20°C-+80°C, Humidity 10%RH-95%RH		
Lifespan / MTBF (H)	Lifespan $\geq$ 100000, MTBF $\geq$ 50000		





## AS series 16:9 High-end DOOH LED Display



### Seamless Splicing Design

Standard panel combine with small module can make Flat, 90-degree smooth curved, Curved optional, perfect to make Naked-eye 3D led display

**16:9**

W800xH900mm panel size, perfect match 720p, 2K, 4K and 8K

720 HD    2K QUAD HD    4K ULTRA HD    8K ULTRA HD



Modular design & High Stability



Signal & Power Dual Backup



Front & Rear Maintenance

# AS Series 16:9 High-end DOOH LED Display

**Thinner**  
**40%**



**Lighter**  
**50%**

Outdoor	P2.83	P4	P6.25
Pixel pitch (mm)	2.83mm	4mm	6.25mm
LED	SMD1415	SMD1921	SMD2727
Pixel Density (dots/m <sup>2</sup> )	126222 dots/m <sup>2</sup>	62500 dots/m <sup>2</sup>	16384 dots/m <sup>2</sup>
Module Size (mm)	400*225mm		
Cabinet Size (mm)	800*900*80mm		
Cabinet Weight (kg)	26kg		
IP Rating	IP65		
Brightness (nits)	5500nits	7000nits	7000nits / 10000nits
Viewing Angle(H/V)	Horizontal: 160°, Vertical: 140°		
Grayscale (Bit)	16bit		
Max. Power Consumption	550W/7000nits; 780W/10000nits		
Ave Power Consumption	165W/7000nits,234W/10000nits		
Refresh	1920Hz as standard/3840Hz optional		
Input Voltage (V)	110V-240V 50/60Hz		
Operate Temperature/Humidity	Temperature -40°C-70C, 10%-90% Humidity		
Lifespan	100000H		



Column



Wall hanging



Right angle



Arc

BORN FOR HIGH-END COMMERCIAL SCREEN



**WS Series**

Super slim and cable free



Only **1 coin** thickness



## Features



Front maintenance & installation



Integrated modular design realizes cable-free connection.



Support wall mounted directly or by simple bars.

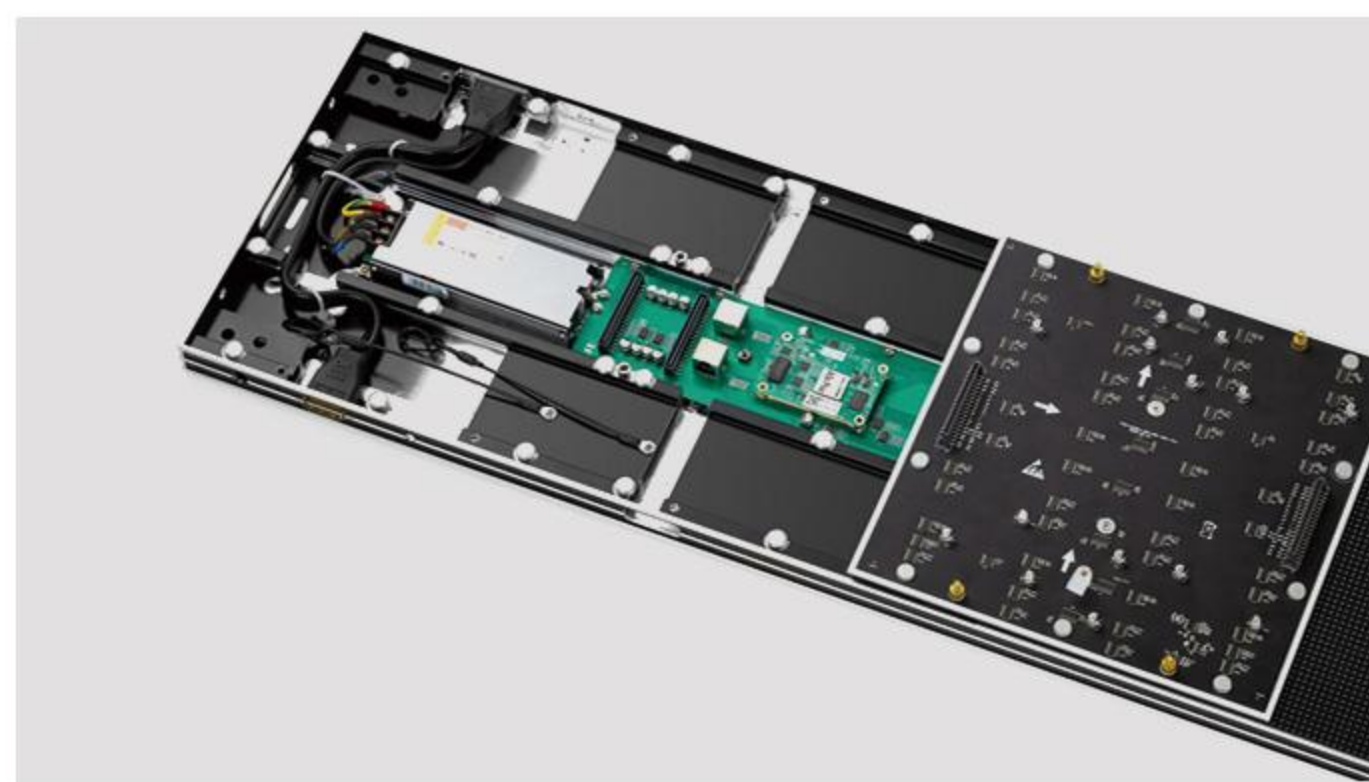


Seamless splicing with high precision:0.05mm,far higher industry 0.15mm standard.

# WS series

Super slim and cable free

BORN FOR HIGH-END COMMERCIAL SCREEN



Parameter	P1.56	P1.95	P2.6	P3.91
LED Configuration	SMD1212	SMD1515	SMD1515	SMD2121
Pixel Density(dots/m <sup>2</sup> )	410881dots/m <sup>2</sup>	262144dots/m <sup>2</sup>	147456dots/m <sup>2</sup>	65536dots/m <sup>2</sup>
Module size(mm)	250x168.75mm	250x250mm		
Panel size(mm)	843.75x250x28mm	1250x250x28mm,1000x250x28mm,750x250x28mm optional		
Cabinet weight(kg)	20kg/m <sup>2</sup>			
IP Rating	IP30			
Brightness(nits)	400-600nits	500-800nits	800-1000nits	800-1000nits
Viewing Angle(H/V)	Horizontal:160°,Vertical:140°			
Gray Scale(bit)	14bit			
Max/Ave Power Consumption	650/195 (W/m <sup>2</sup> )			
Refresh	3840HZ			
Input Voltage(V)	90V-264V 47/63Hz			
Work environment	Temperature -30°C-+70°C, 10%-95% Humidity			
Lifespan	Lifespan≥100000,MTBF ≥50000			



# Visualisation display In Camera VFX, Broadcast, E-Sport



<4ms latency



1500nits



240FPS



19BIT



100% DCI-P3



8670Hz  
Scan Rate



1.6 JND  
Mean Color Accuracy



HDR10/HLG  
4:4:4 36BITS/PX



High Speed  
Network Distribution

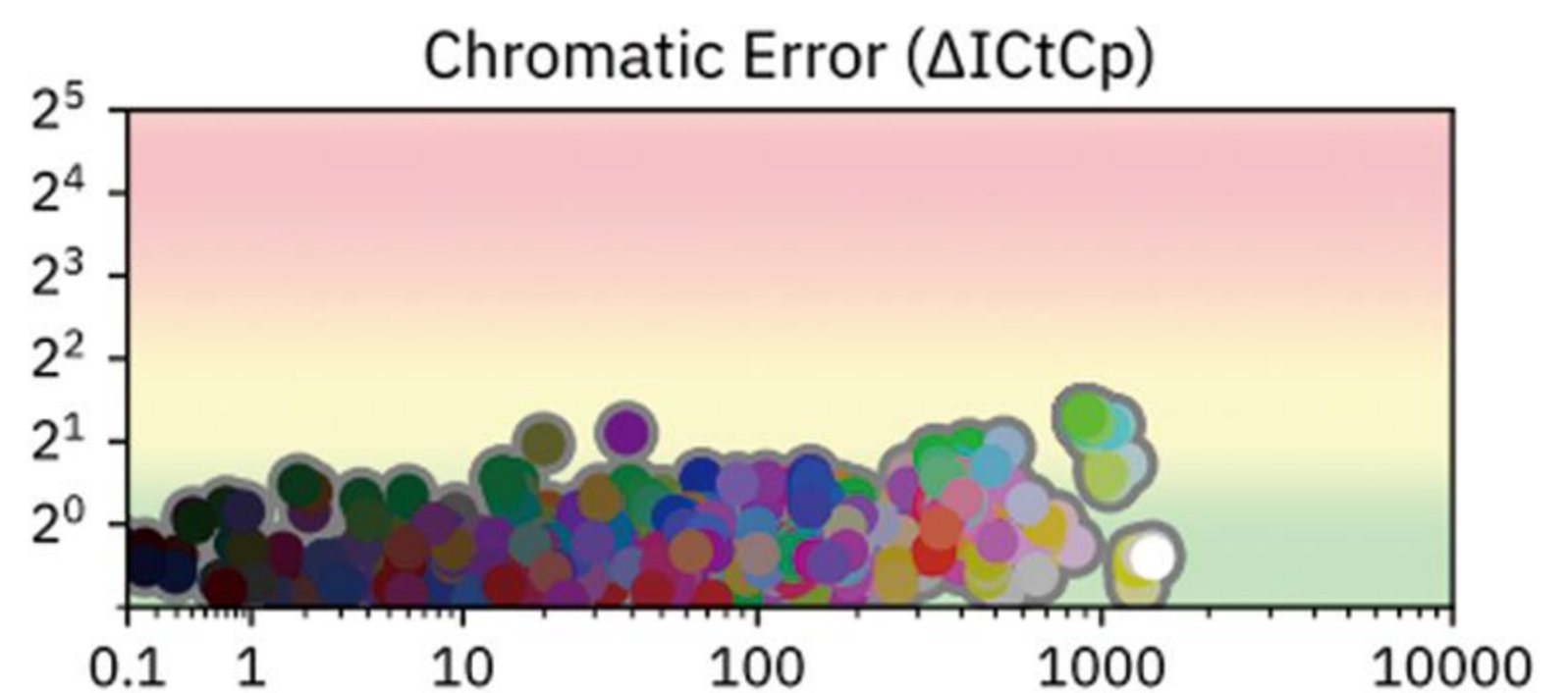
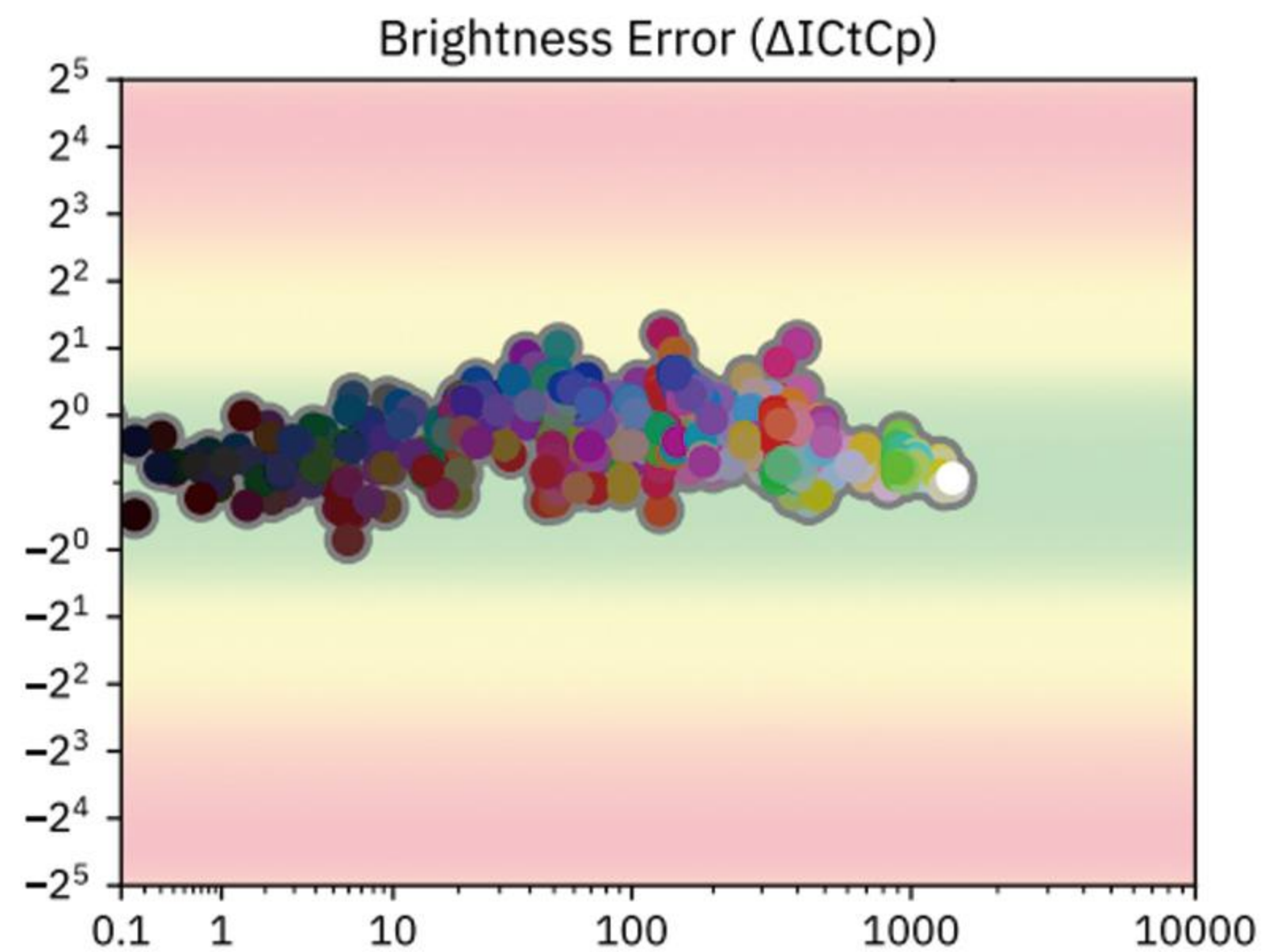
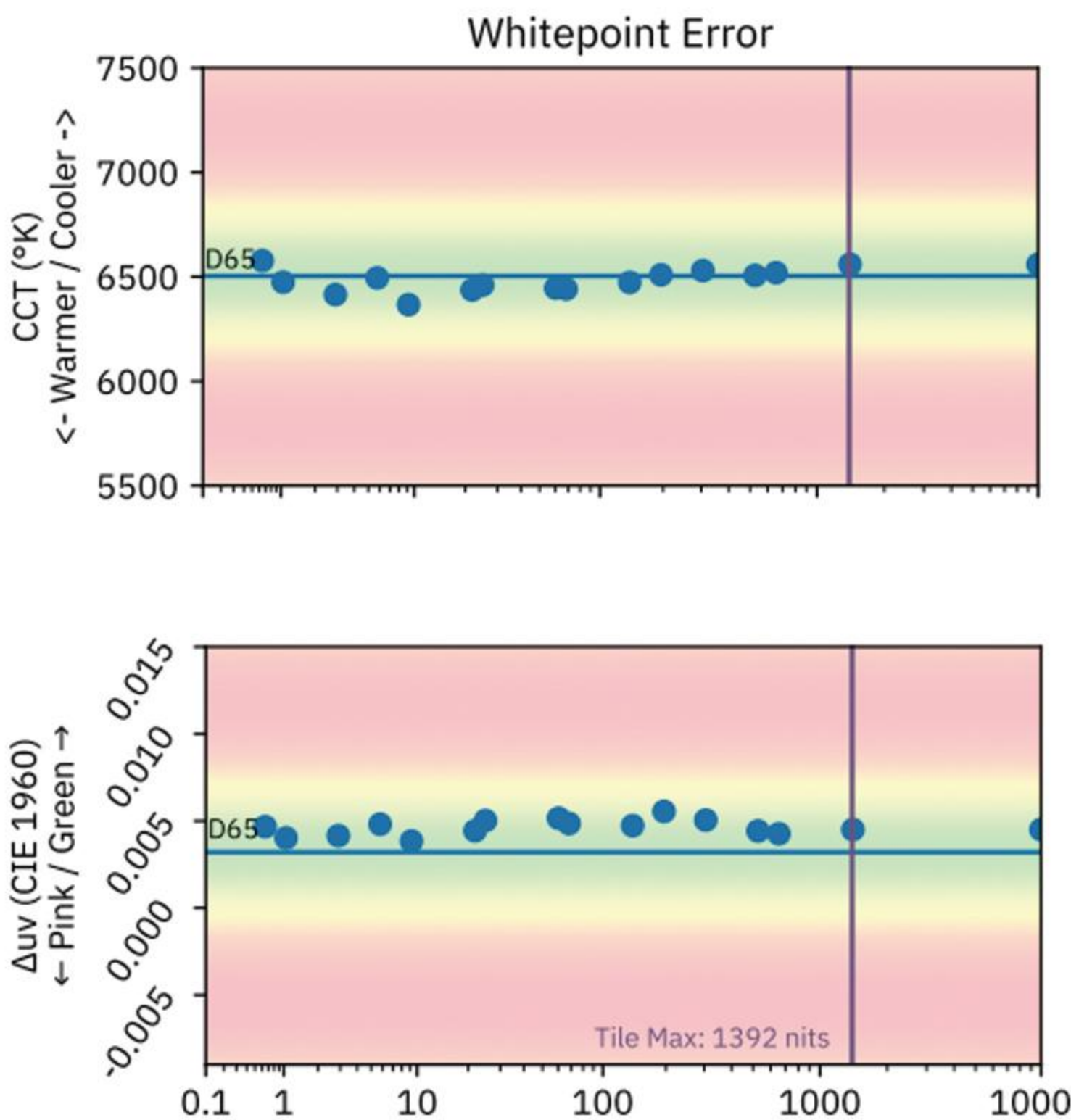
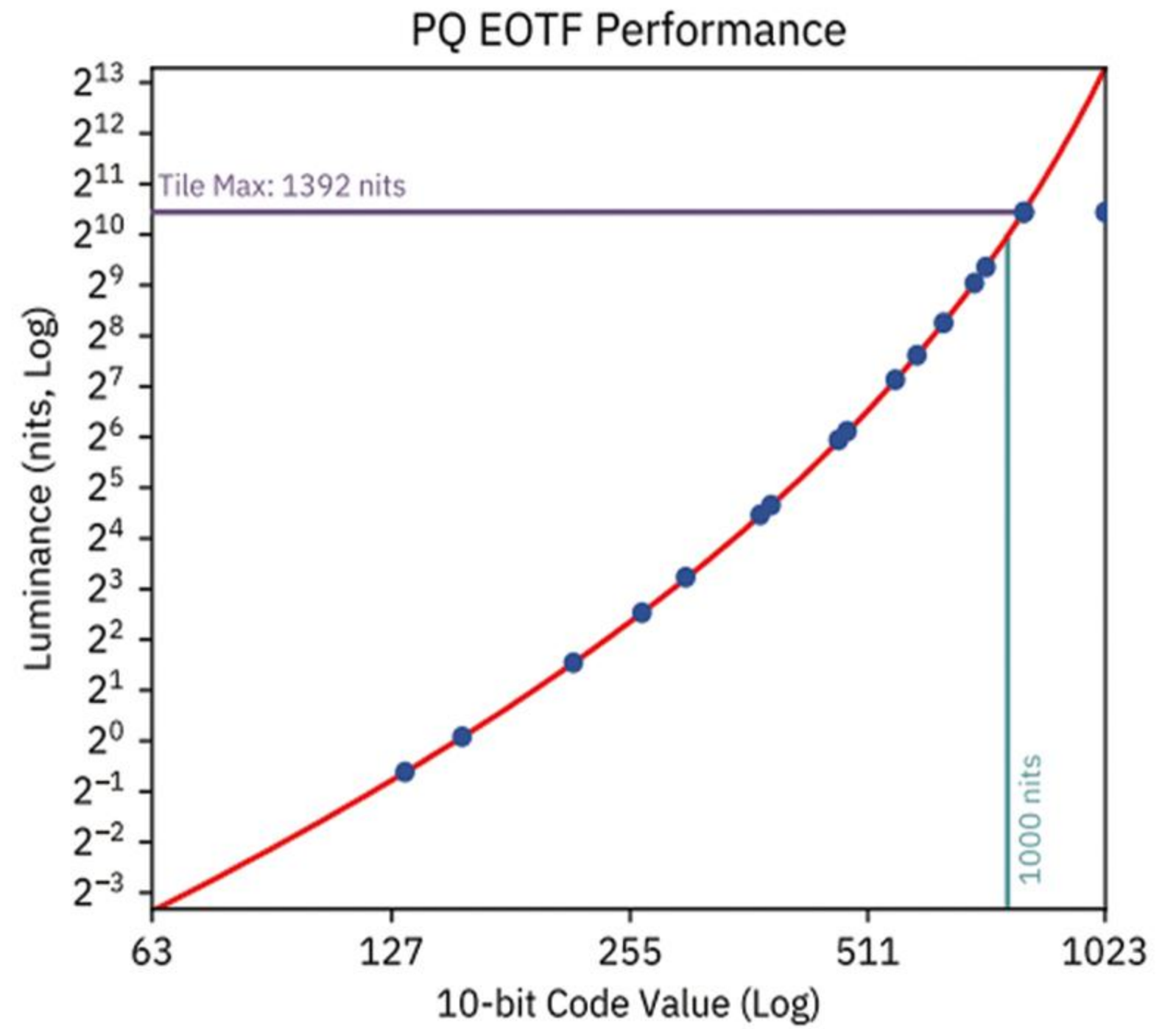
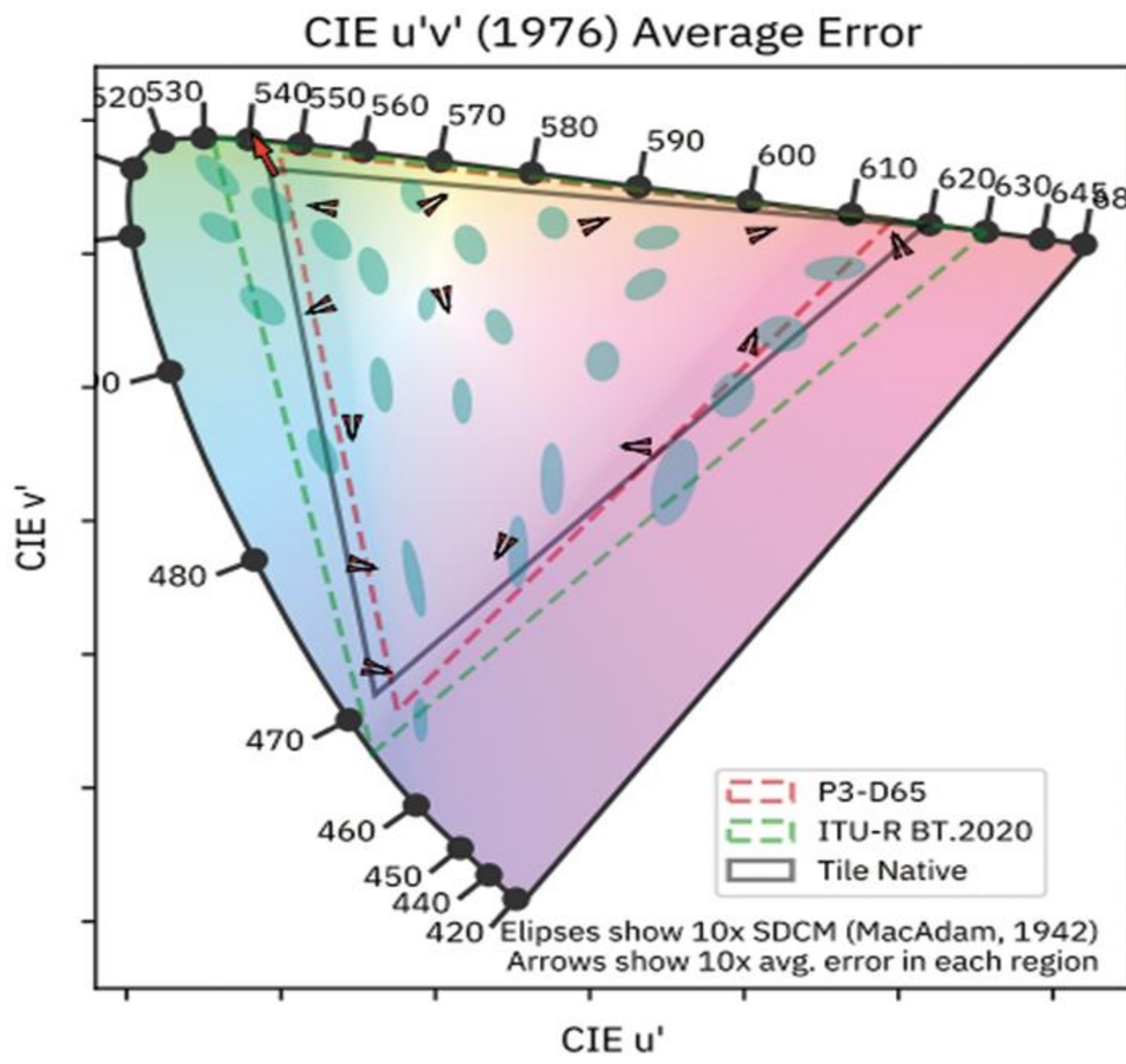
Specifications	P1.95 XR	P1.95 XR HB	P2.6 XR	P2.6 XR HB
Brightness(cd/m <sup>2</sup> )	1000	2000	800	1500
Scan rate (Hz)	8670Hz			
Scan ratio	1:8			
Color Gamut	100% DCI-P3 ACES RGC compression (optional)			
Processing technology	Deepsky			
Color Accuracy	ΔICtCp average error 1.6JND, 95th error 3.1JND (Measurements according to ETC methodology)			
Processing greyscale	32 bit (floating points)			
Displayed greyscale	19 bit with Variable Current technology and delta-sigma modulator			
Contrast ratio	>4000:1	>9000:1	>3500:1	>7000:1
Video input	HDMI2.0a / 12G-SDI/ SMPTE2110 (100Gb/s)			
Frame rate (Hz)	23.98Hz, 24Hz, 25Hz, 29.97Hz, 30Hz, 47.95Hz, 48Hz, 50Hz, 59.94Hz, 60Hz, 100Hz, 119.88Hz, 120Hz, 144Hz, 240Hz			
Panel size	500 x 500mm			
Panel resolution	256*256		192*192	
Curve (concave & convex)	0 / ±2.5° / ±5° (optional)			

Simple, Of Course MLED! The World-Class Advanced Technology Make LED Display Simple.

# MPLED XR Color accuracy tests (according to ETC methodology and built-in DEEPSKY technology)

Mean  $\Delta E$  2000: 0.7  
95th percentile: 0.9

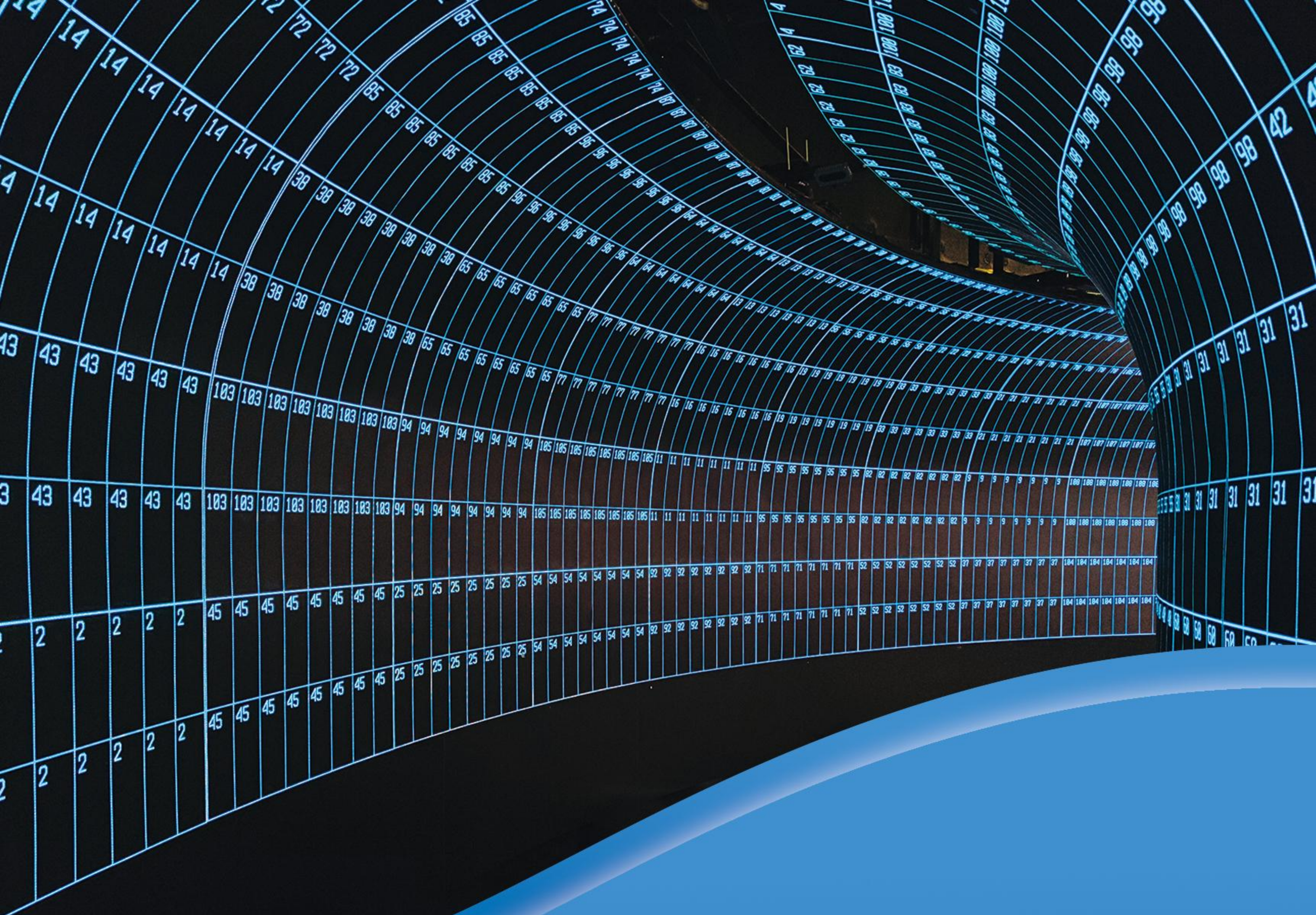
Mean  $\Delta ICtCp$ : 1.6  
95th percentile: 2.4



## We offer you the best:

- Most accurate colors
- New GPU processing
- Best reliability with Cloud monitoring
- Curated LED for the largest color gamut
- Smart network 100Gb/s Ethernet data distribution
- No scanning artefacts, even at very low brightness
- Perfect greyscale thanks to a novel IC LED driver with Variable Current Technology





# CV Series

## The king of creativity



Large angle



No warping



Good flexibility



No degumming



16:9

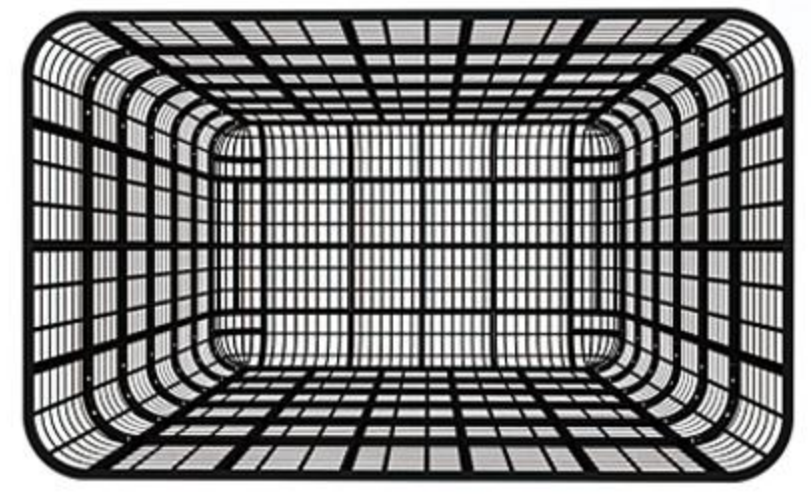
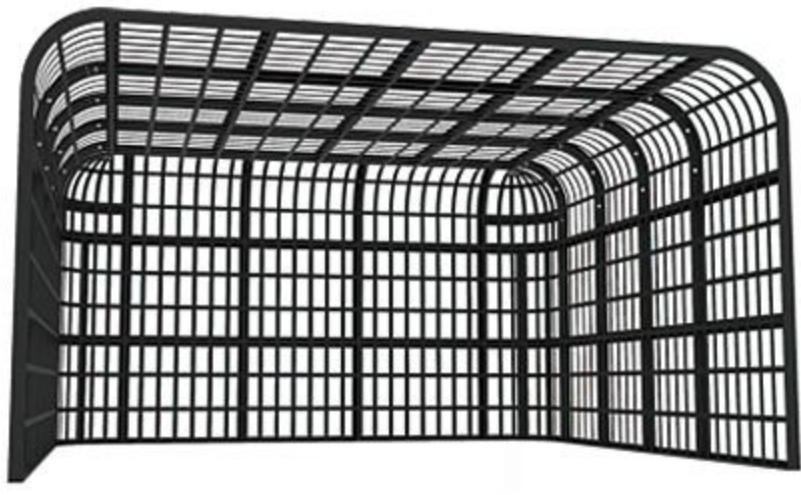


High contrast

Support 100% customize



# Immersive Virtual Interactive Experience Space



## Application

Tourist attractions, City landmarks, Museums, Planetariums, Star hotels, Luxury stores, Brand chains, Exhibition hall, Exhibition, Fashion Show, Wedding, Commercial Centre, Shopping mall, Vocal concert, Car 4S store, etc







## RB Series

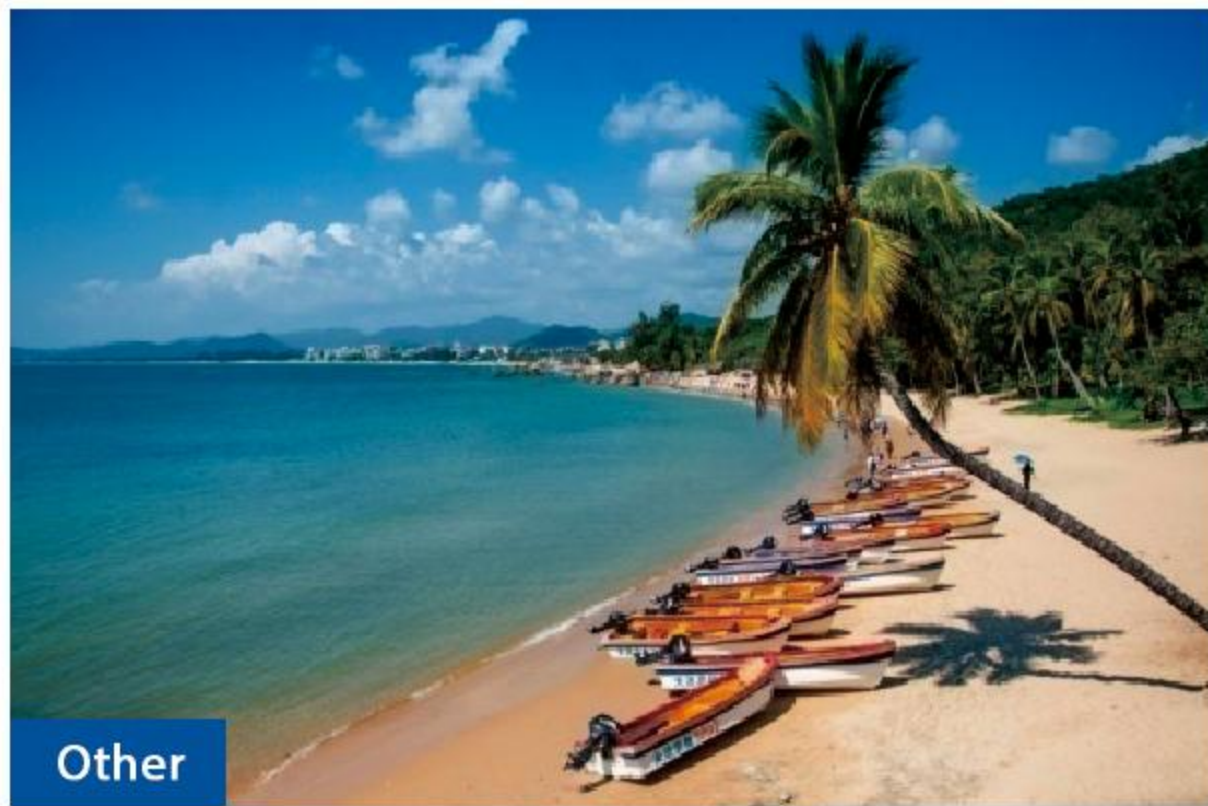
Best selling popular Rental stage LED Display



Angles  $0^{\circ} \pm 2.5^{\circ} \pm 5^{\circ}$



# RB Series Best selling popular Rental stage LED Display



Low gray scale



High gray scale



1920HZ



3840HZ

Parameter	Indoor P2.6	Indoor P2.9	Indoor P3.9	Outdoor P2.9	Outdoor P3.9
LED Configuration	SMD1515	SMD2121	SMD2121	SMD1415	SMD1921
Pixel Density(dots/m <sup>2</sup> )	147456dots/m <sup>2</sup>	112896dots/m <sup>2</sup>	65536dots/m <sup>2</sup>	112896dots/m <sup>2</sup>	65536dots/m <sup>2</sup>
IP Rating	IP40			IP65	
Brightness(nits)	800-1200nits			4000-5000nits adjustable	
Max Power Consumption	640/192 (W/m <sup>2</sup> )				
Module size(mm)	250x250mm				
Cabinet size(mm)	500x500mm & 500x1000mm				
Cabinet weight(kg)	7.5kg/13kg				
Viewing Angle(H/V)	Horizontal:160°,Vertical:140°				
Gray Scale(bit)	16bit				
Refresh	3840Hz				
Input Voltage(V)	110V-240V 50/60Hz				
Work environment	Temperature -20°C-60°C, 10%-90% Humidity				
Lifespan	Lifespan≥100000H,MTBF ≥50000H				



Japan 40m<sup>2</sup> P3.91 Outdoor LED Display



Indonesia 120m<sup>2</sup> P2.9 Indoor LED Display



Japan 26m<sup>2</sup> WPT P2.9 Indoor LED Display



Syria 90m<sup>2</sup> P3.91 Indoor LED Display

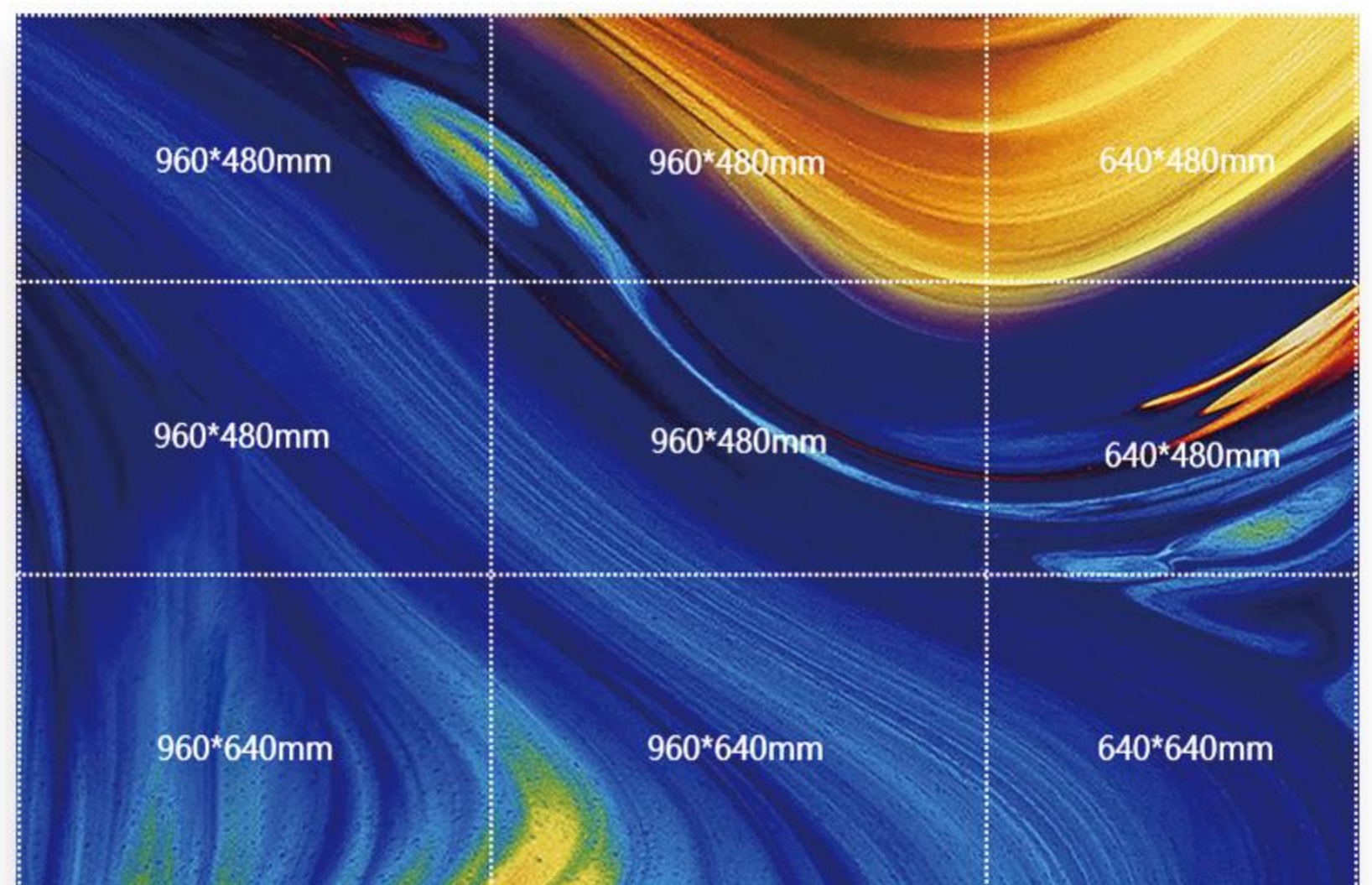
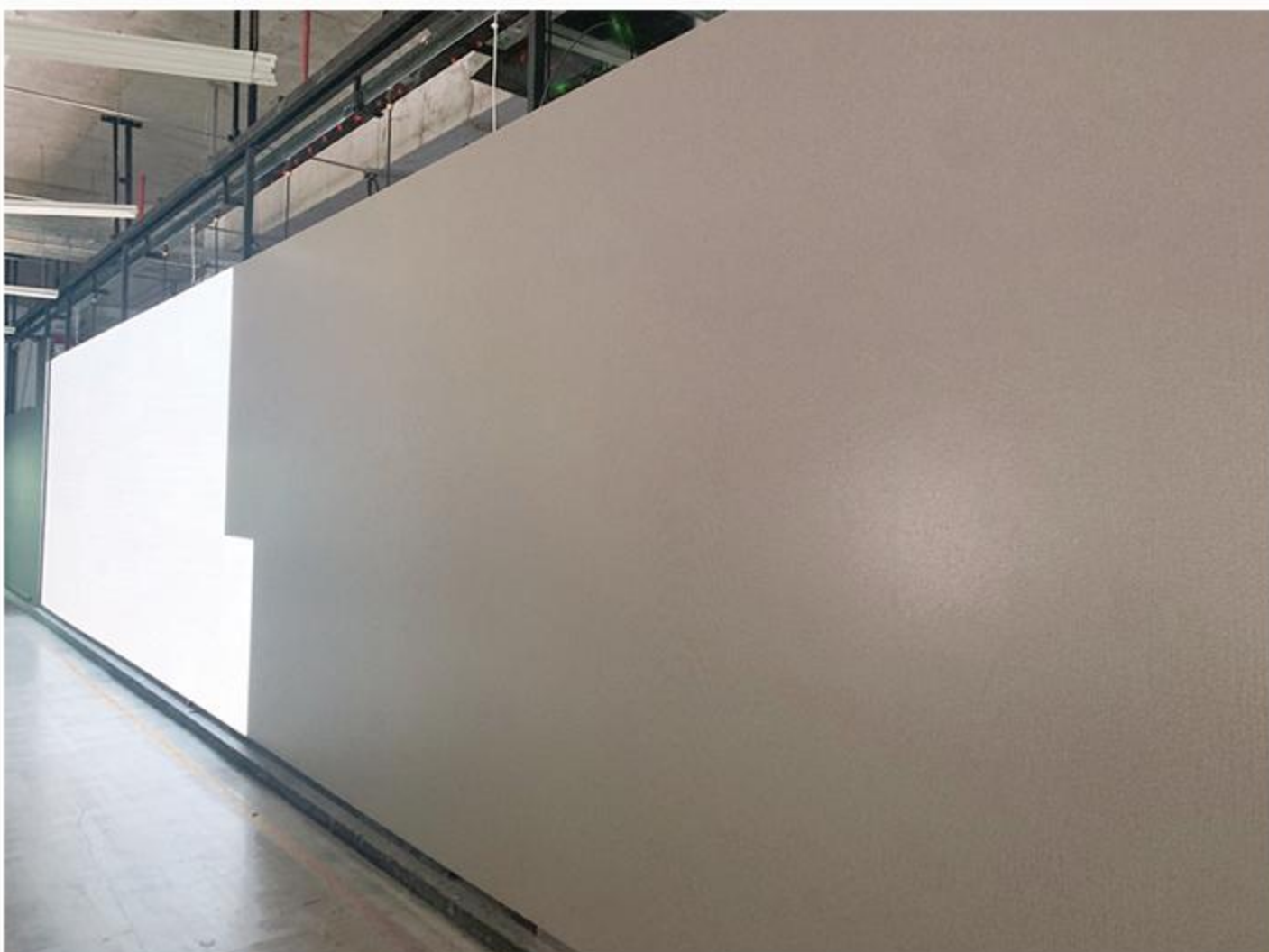
New 2023

# WN series

The most popular commercial  
LED Display

STOCK SCREEN

## WN Series



## Marketing value

- Front & Rear maintenance optional.
- Iron cabinet price, but with aluminum material.
- Support mounting directly on wall or by simple bars.
- Support creative installation with inner arc from 0°-180°
- Seamless splicing with high precision: only 0.05mm error, far higher than industry standard 0.15mm.
- Four sizes can be spliced together, it can meet any project size requirements: W960xH640mm, W960xH480mm, W640xH640mm, W640xH480mm.

19 kg/m<sup>2</sup>

Weight

75 mm

Thickness

3840 Hz 

Refresh



MPLED®



Parameter	P1.8	P2	P2.5	P4	P5
LED Configuration	SMD1515	SMD1515	SMD2121	SMD2121	SMD2121
Pixel Density(dots/m <sup>2</sup> )	284444dots/m <sup>2</sup>	250000dots/m <sup>2</sup>	160000dots/m <sup>2</sup>	62500dots/m <sup>2</sup>	40000dots/m <sup>2</sup>
Module size(mm)	320x160mm				
Panel size(mm)	W960xH480mm,W960xH640mm,W640xH640mm,W640xH480mm				
Cabinet information	Aluminum profile,Weight: 19kg/m <sup>2</sup> ,thickness:75mm				
IP Rating	IP40				
Brightness(nits)	800nits	800nits	1200nits	1000nits	1200nits
Viewing Angle(H/V)	Horizontal:160°,Vertical:140°				
Gray Scale(bit)	16bit				
Max/Ave Power	600/180 (W/m <sup>2</sup> )	530/159(W/m <sup>2</sup> )	580/174 (W/m <sup>2</sup> )	620/186 (W/m <sup>2</sup> )	400/120 (W/m <sup>2</sup> )
Refresh	3840Hz				
Input Voltage(V)	110V-240V 50/60Hz				
Work environment	Temperature -20°C-60°C, 10%-90% Humidity				
Lifespan	Lifespan≥100000H,MTBF ≥50000H				